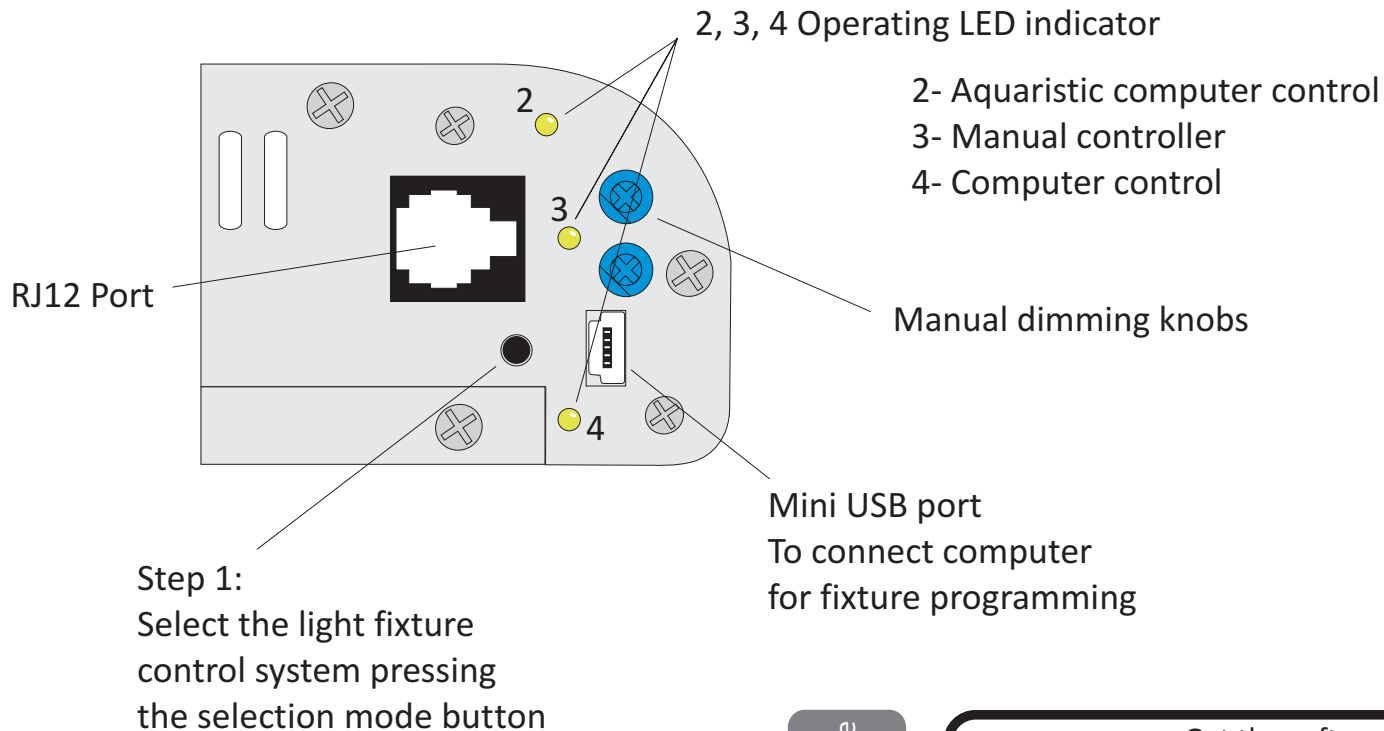


Lumina LED and Lumina Hybrid controller

quick guide



aquaristic computer control mode

RJ12 Port

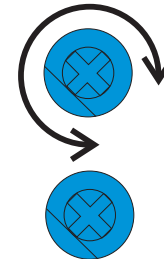
Connect here an aquaristic computer Dimming system 1-10v.

Port distribution



1-12V
2-channel1
3-ground
4-free
5-channel 2
6-free

manual control mode



Turn knob with an screwdriver
2 dimming channels

BLAU
aquaristic

computer control mode



Get the software Lumina Led Controller at www.blau-aquaristic.com

Connect the light fixture to your computer by USB connector
Turn on the light and open the software
Install the latest Firmware (Main Menu: Tools)
Program your light fixture with many light effects
Load the program to your light
Disconnect the light from the computer
Enjoy your aquarium!





☒ Use system date

28 mar, 17:54

Use the date system or change it. You can use too to simulate the light curve along the year before to decide the definitive latitude.



Cloudy function.

If you want to give more realism to your aquarium light effects, you can select the "cloudy function". Every 8 hours the light decides the next weather taking care of the the probability that you choosed.



Storm function

If you need more realism add the Storm effect. Only if you have select the Cloudy function you can add the possibility of have storms in your aquarium. The probability is linked to the Cloudy probability



Moon Fases Function

Enable the function and then choose the first day of Full Moon



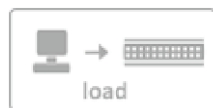
Intensity filter

You can modify the intensity of all the channels at the same time. You can correct the light value if you think that is too much low or strong.



Select the virtual deep of your aquarium with the "deep filter"
At -10m the balance of the blue and the white is the same

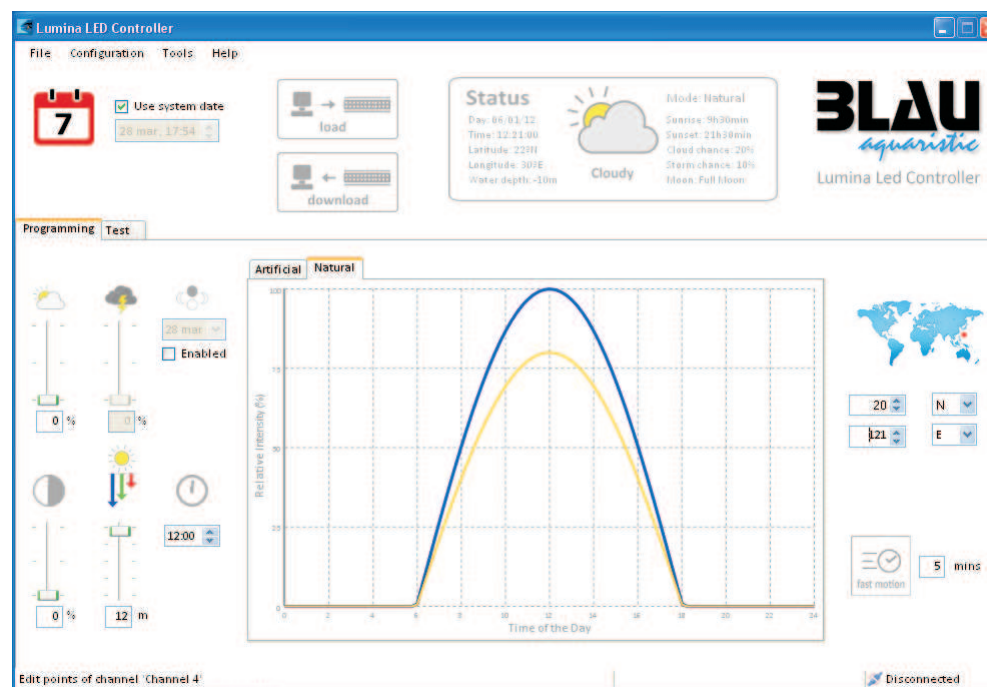
quick guide



Send your program to the light fixture before disconnecting it of the computer



Download the program that the fixture have currently.



BLAU

aquaristic

Lumina Led Controller Natural Mode



Select the latitude and longitude for your aquarium



Press "fast motion" to see the 24h light effect summarized in the desired time



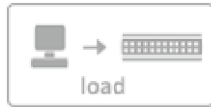
Change the "noon" of your light respect the real time. In this way you can enjoy your aquarium when you arrive at home in the evening.



☒ Use system date

28 mar, 17:54

Use the date system or change it. You can use too to simulate the light curve along the year before to decide the definitive latitude.



Send your program to the light fixture before disconnecting it of the computer



Download the program that the fixture have currently.



Cloudy function.

If you want to give more realism to your aquarium light effects, you can select the "cloudy function". Every 8 hours the light decides the next weather taking care of the the probability that you choosed.



Storm function

If you need more realism add the Storm effect. Only if you have select the Cloudy function you can add the possibility of have storms in your aquarium. The probability is linked to the Cloudy probability



Moon Fases Function

Enable the function and then choose the first day of Full Moon



Intensity filter

You can modify the intensity of all the channels at the same time. You can correct the light value if you think that is too much lower or strong.



Change the "noon" of your light respect the real time. In this way you can enjoy your aquarium when you arrive at home in the evening.

quick guide

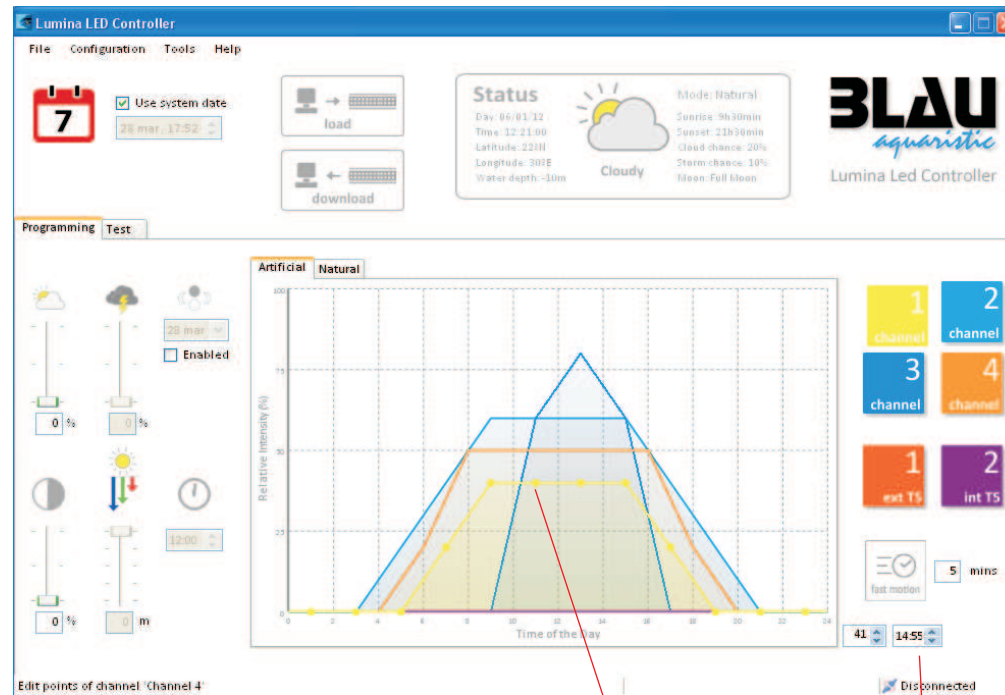


BLAU

aquaristic

Lumina Led Controller

Artificial Mode



Press the channel button that you want to edit and the nodes of his graph will appear.



Press "fast motion" to see the 24h light effect summarized in the desired time

Here you can see or write the exactly position of the currently edited node

Edit the 12 nodes of each 4 channels to create your optimal light design

quick guide



BLAU

aquaristic

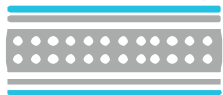
Lumina Led Controller Test Mode



Channel 1

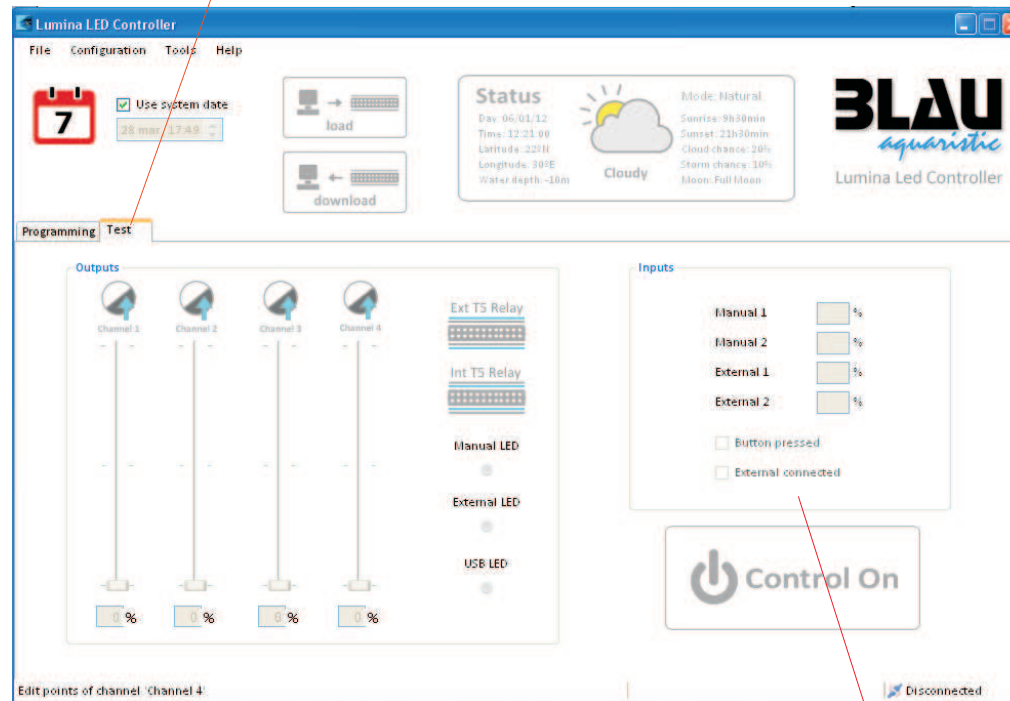
Moving up and down the sliders of the 4 Channels you can check the correct performance and see the intensity. You can mix Channels to watch the color combination.

Ext T5 Relay



In the model Lumina Hybrid (T5 + LED) you can turn on and turn off the T5 pressing this button.

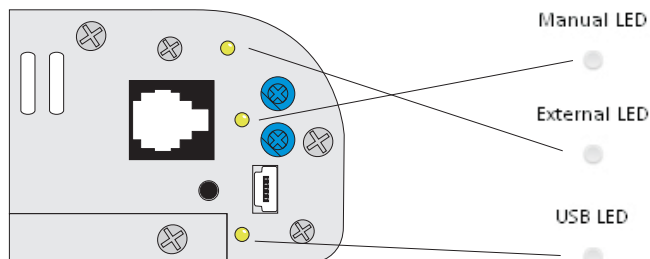
Test Mode will help you to see if all is working correctly. In this mode you can do color combinations manually that later you can use for program the fixture.



Press "Control On" to active the Test Mode

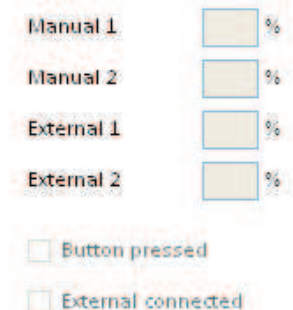


Press "Control Of" to finish the Test Mode



Press the small buttons to check the correct performance of the green LED function

Here you can see the input devices. Power position of the Manual Blue Knobs or if it's connected to a external aquaristic computer



quick guide



BLAU

aquaristic

Lumina Led Controller General View

Program Menu

File

To Save configurations or use old saved ones.

Configuration

To configure the program.

First of all enable the different channels of your light fixture or disable the features that don't correspond. Choose the colors that you want for the channel's buttons and the graphic.

Tools.

Download the last firmware of the program.

Test

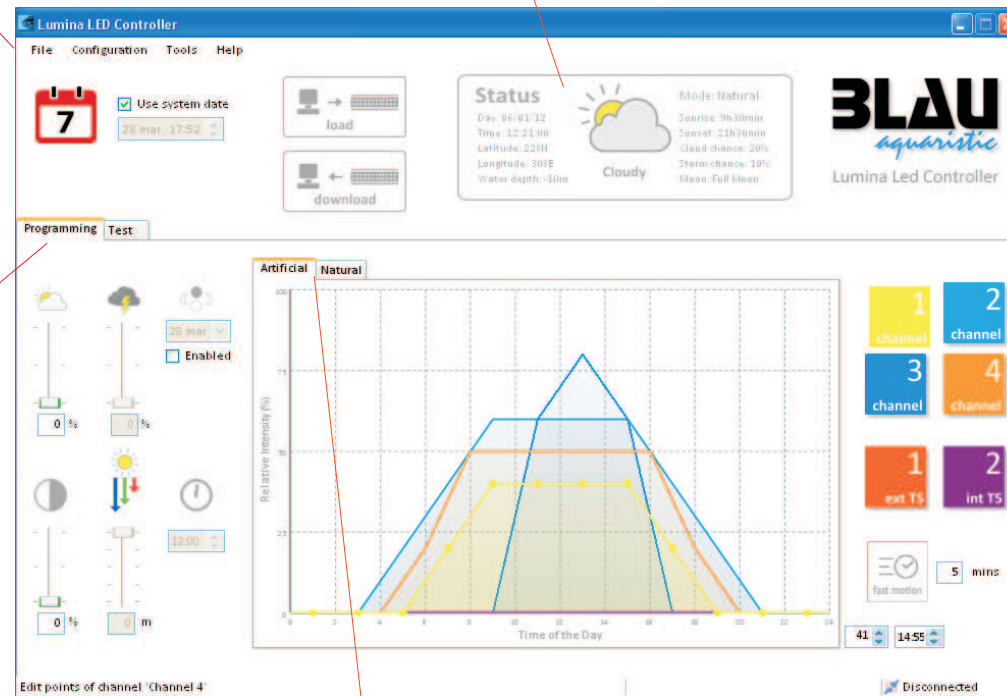
Check the correct performance of your light fixture

Programming

Program your light with two modes



With the Status you will know what is going in your Lumina Led



Program messages

Programming modes:

Artificial: you can configure all the parameters with 4 different channels

Natural: The program calculates the light intensity and the daylight according to the latitude and longitude desired.

Program status